



Color Story[®]

18 East 48th Street, Suite 1104 NYC, NY 10017

☎ 800-223-1232, 212-832-8013 📠 212-308-3621 🌐 www.colorstory.com

Celebrate in Color[®]
Winter 08

Dear Jeweler,

Our new catalog showing more than 600 images has a new layout. Presenting everything by "collection" should help you find our styles more easily. The catalog is also available as a PDF file that can be downloaded off our website www.colorstory.com or you may even email a link to it to your best customers for their review.

Not every item is shown in every color, but if you see an earring in one color combination you can count on us offering that same color in a matching ring or pendant and so on. Many of the images show the jewelry close to actual size. The style numbers below each image tell you the number of the piece and the stones contained in it.

To understand the abbreviations we use in the style numbers refer to the list below. **It is important you refer to a color combination in the same order that we do. Changing the order of the colors (gemstones) in a style number will alter the color arrangement.**

Ame = Amethyst	Per = Peridot	Rho = Rhodolite Garnet
Iol= Iolite	PT = Pink Tourmaline	GT = Green Tourmaline
BT = Sky Blue Topaz	WT = White Topaz	Gar = Mozambique Garnet
Cit = Citrine	Dia = Diamond	Mint= Green Amethyst
PS= Pink Sapphire	BS= Blue Sapphire	LB= London Blue Topaz
SQ= Smokey Quartz	FR= French Rose (Lilac Amethyst)	LC= Lemon Citrine
PABRCI =Per,Ame,Bt,Rho,Cit,Iol	PABPT= Per, Ame, Bt, Pt	Confetti= multicolor

As always we keep a large inventory of finished pieces and a great quantity of ready to set mountings to fill your orders as quickly as possible. We are committed to do our best to meet your expectations all the time. We publish up-to-date books with new items practically every month as well as put them on our website www.colorstory.com regularly. Please call for prices of any special combinations your customer might want.



Robert Leser
President

IMPORTANT DETAILS

- ANY ERRORS IN THIS CATALOG ARE SUBJECT TO CORRECTION WITHOUT NOTICE
- PRICES ARE FOR 14K GOLD AT KEY + 10 AND ARE SUBJECT TO CHANGE WITHOUT NOTICE
- ADD \$88 TO PRICE FOR OMEGA CLIPS IF NOT SHOWN STANDARD
- SHIPPING AND INSURANCE IS ADDED TO ALL SHIPMENTS
- CLAIMS FOR WORKMANSHIP MUST BE MADE WITHIN 14 DAYS OF RECEIPT
- **RETURNS FOR CREDIT OR REPAIR WILL NOT BE ACCEPTED WITHOUT AN RA NUMBER**
- RETURNS ARE SUBJECT TO A RESTOCKING FEE IF NOT IN ORIGINAL CONDITION
- TERMS ARE NET 30 DAYS TO JBT 1 & 2 RATED RETAILERS UNLESS PREAPPROVED OTHERWISE.
- ALL ITEMS ARE AVAILABLE IN 18K AS SPECIAL ORDER EXCEPT JEWELMESH AND WATCHES.

Index

Style #	Page #	Style #	Page #	Style #	Page #	Style #	Page #
3371	34	3413	25-24	3446	9	3463	12-13
3373	35, 37, 38	3415	17-18,25-26,29	3447	21,23-24	3464	10-11
3380	32	3416	28-27	3449	4	3465	10-11
3381	32	3417	16	3450	14	3466	15
3384	36-37	3419	19, 27	3451	7	3467	41
3387	43	3420	34	3452	14	3468	14
3389	38	3422	25-26	3453	41	3469	12-13
3390	43	3423	40	3454	42	3470	31
3401	35, 39	3424	29	3455	5	3415	28
3403	33	3425	21	3456	8	3416	28
3405	31	3434	29	3457	8	3445	4
3407	19-20,22,24	3438	29	3458	42	3449	6
3408	35	3442	40	3459	42	3466	15
3408	39	3444	9	3460	42		
3409	30	3445	5-6	3461	42		
3410	30			3462	12-13		

Ring stock size

R3373	6 1/2
R3380	6 3/4
R3384	6 1/4
R3405	6 3/4
R3407	6 3/4
R3410	7 1/4
R3416	6
R3434	7 1/4
R3444	6 1/2
R3445	7 1/4
R3446	6 1/2

R3447	7 1/2
R3448	6 1/2
R3456	7
R3457	6 3/4
R3462	6 3/4
R3463	7
R3465	7
R3469	6 1/2
R3471	6 3/4
R3472	6 1/2

Manhattan *pave'*

N3445-49 BT-DIA
\$7720
Dia 1.00

N3445-49 LC-DIA
\$7700
Dia 1.00

B3449-10B CONFETTI
\$6150
Dia 0.85

N3449-7A CONFETTI
\$5140
Dia 0.60

B3449-10B BT-DIA
\$5830
Dia 0.85

B3449-10B LC-DIA
\$5870
Dia 0.85



N3445 DIA =.70
 PND3445 DIA =.60
 N3455 DIA =.60



N3445 AME-DIA
 \$3940



N3445 PER-DIA
 \$4460



N3445 LC-DIA
 \$3900



N3445 PT-DIA
 \$5400



N3445 BT-DIA
 \$3910



N3455 AME-DIA
 \$4300



N3455 PER-DIA
 \$4810



N3455 LC-DIA
 \$4270



N3455 IOL-DIA
 \$4630



N3455 BT-DIA
 \$4270



N3455 PT-DIA
 \$5510



PND3445 AME-DIA
 \$3300



PND3445 IOL-DIA
 \$3630



PND3445 PER-DIA
 \$3810



PND3445 PT-DIA
 \$4510



PND3445 BT-DIA
 \$3270

R3445 DIA = .85



R3445 IOL-DIA
\$3700



R3445 LB-DIA
\$3380



R3445 BT-DIA
\$3370



R3445 GAR-DIA
\$3370



R3445 FR-DIA
\$3360



R3445 PT-DIA
\$4640



R3445 LC-DIA
\$3360



R3445 MINT-DIA
\$3360



R3445 PER-DIA
\$3750



E3449-45B PER-DIA
\$4770



E3449-45B PT-DIA
\$5700



E3449-45B LC-DIA
\$4710



E3449-45B LB-DIA
\$4770



E3449-45B IOL-DIA
\$4970



E3449-45B BT-DIA
\$4730



E3445 PT-DIA
\$4140



E3445 BT-DIA
\$3650



E3445 PER-DIA
\$3670



E3445 LC-DIA
\$3640



E3449-A PT-DIA
\$2260



E3449-A IOL-DIA
\$1890



E3449-A BT-DIA
\$1770



E3449-A LC-DIA
\$1770



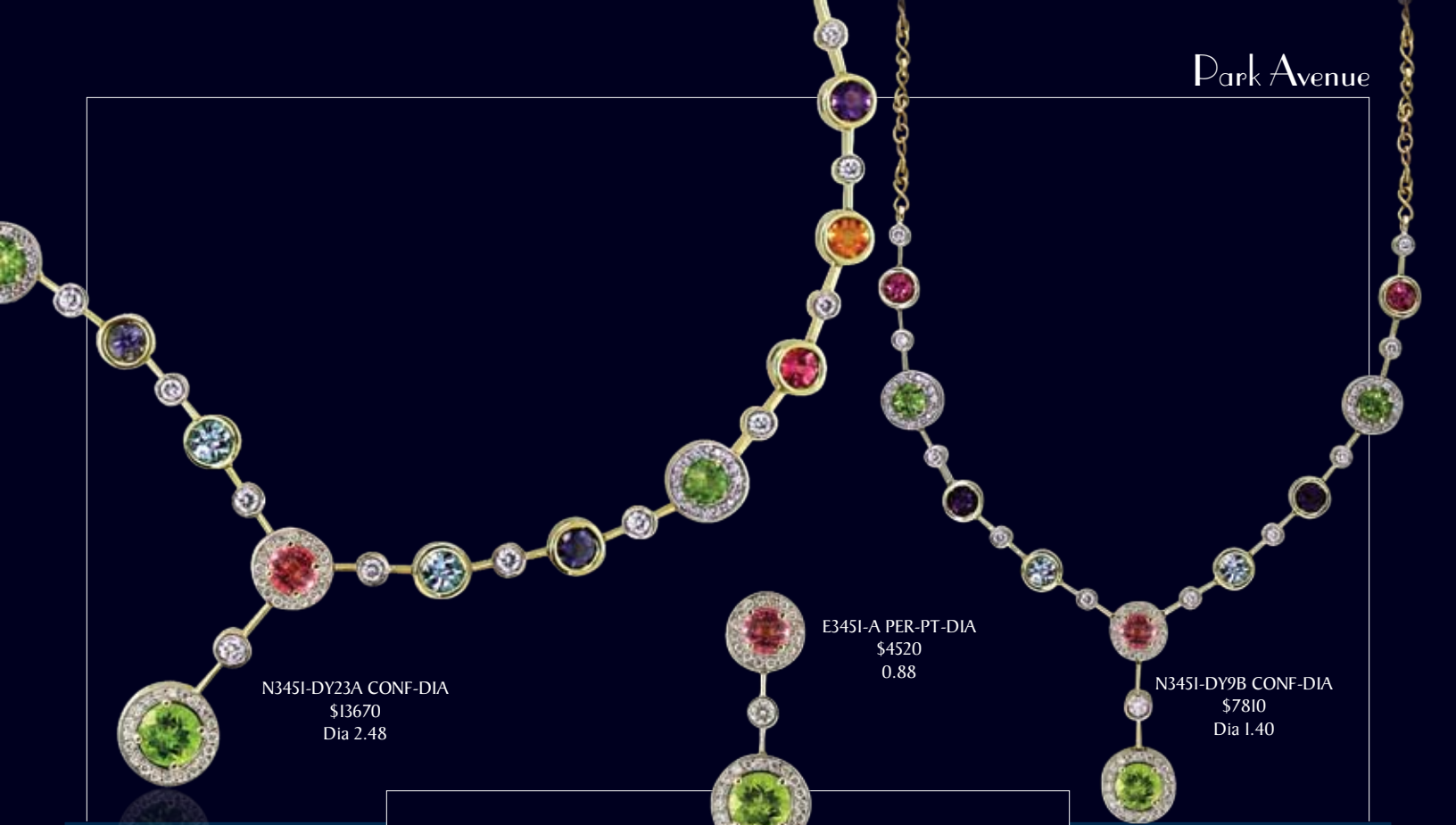
E3449-A PER-DIA
\$1790



E3449-A CIT-DIA
\$1770

E3449-B also available with 0.20 ct dia for \$645 less

E3449-45 DIA = 1.46
E3445 DIA = .98
E3449 DIA = .48



N345I-DY23A CONF-DIA
\$13670
Dia 2.48

E345I-A PER-PT-DIA
\$4520
0.88

N345I-DY9B CONF-DIA
\$7810
Dia 1.40



PND345I-A BT-IOL-DIA
\$2330
Dia 0.44



E345I-C PER-PT-DIA
\$2590
Dia 0.48

E345I-C PT-BT-DIA
\$2750
Dia 0.40



PND345I-A PT-DIA
\$2960
Dia 0.44



B345I-C CONF-DIA
\$5020
Dia 0.69

B345I-A CONF-DIA
\$7550
Dia 1.55

Manhattan *pave*'

R3457 DIA = .45
R3456 DIA = .68



R3457 FR-PT-DIA
\$2470



R3457 IOL-BT-DIA
\$2260



R3457 PER-BT-DIA
\$2230



R3457 PER-PT-DIA
\$2740



R3457 BT-LB-DIA
\$1970



R3457 AME-PER-DIA
\$1980



R3457 PT-PER-DIA
\$2640



R3457 BT-IOL-DIA
\$2030



R3456 PT-PER-DIA
\$4790



R3456 PER-PT-DIA
\$4710



R3456 BT-DIA
\$3370



R3456 BT-PER-DIA
\$3390



R3456 IOL-BT-DIA
\$3840



R3456 LC-PT-DIA
\$3840



PND3456 BT-DIA
\$2760



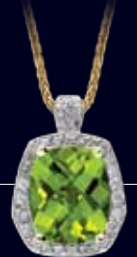
PND3456 FR-DIA
\$2700



PND3456 DIA = .72



PND3456 LB-DIA
\$2840



PND3456 PER-DIA
\$4290



PND3456 AME-DIA
\$2870



PND3456 CIT-DIA
\$2770



PND3456 GAR-DIA
\$2880



PND3456 LC-DIA
\$2770

R3446 DIA = .70
R3444 DIA = 1.00

Manhattan *pave*'



R3444 AME-DIA
\$3800



R3444 BT-DIA
\$3680



R3444 LC-DIA
\$3680



R3444 MINT-DIA
\$3680



R3444 PER-DIA
\$5230



R3446 CIT-DIA
\$3110



R3446 PER-DIA
\$3660



R3446 PT-DIA
\$4400



R3446 BT-DIA
\$3130



R3446-W PT-DIA
\$4400



R3446 LB-DIA
\$3150



PND3446 DIA = .50



PND3446 BT-DIA
\$2340



PND3446 IOL-DIA
\$2700



PND3446 AME-DIA
\$2370



PND3446 LC-DIA
\$2320



PND3446 PER-DIA
\$2880

NAVETTE



B3465-A CIT-DIA
\$10300
Dia 2.00

B3465-A BT-DIA
\$10290
Dia 2.00

R3465 BT-DIA
\$2950

R3465 PT-DIA
\$4960

R3465 LC-DIA
\$2950

R3465 PER-DIA
\$4120

R3465 DIA = .48



N3464 BT-DIA
\$4660

N3464 GAR-DIA
\$4630

N3464 LC-DIA
\$4510

N3464 PT-DIA
\$6960

N3464 DIA = .75

N3464 AME-DIA
\$4660

N3464 CIT-DIA
\$4560

N3464 LB-DIA
\$4660

N3464 PER-DIA
\$5810

N3464 WT-DIA
\$4660

-10-



DE3465 DIA =.60
 E3465 DIA =.35
 PND3465 DIA =.18
 DE3464 DIA =.85

© Leser Enterprises LTD, all rights reserved.

B3462-9 CONF-DIA
\$9430
Dia = 1.60



PND3462 DIA = .35
 PND3463 DIA = .35

 PND3462 AME-DIA \$2690	 PND3462 LC-DIA \$2500	 PND3462 LB-DIA \$2700	 PND3462 GAR-DIA \$2830	 PND3462 FR-DIA \$2620	 PND3462 CIT-DIA \$2620	 PND3462 BT-DIA \$2600	 PND3462 SQ-DIA \$2500
 PND3463 GAR-DIA \$2670	 PND3463 LC-DIA \$2410	 PND3463 CIT-DIA \$2450	 PND3463 BT-DIA \$2430	 PND3463 AME-DIA \$2530	 PND3463 LB-DIA \$2590		

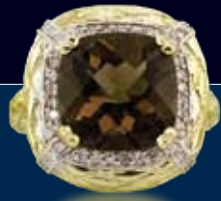
 E3462 AME-DIA \$1810	 E3462 BT-DIA \$1780	 E3462 FR-DIA \$1810	 E3462 IOL-DIA \$2370	 E3462 LC-DIA \$1770	 E3462 PT-DIA \$3130	 E3462 WT-DIA \$1780
 E3462-Y BT-DIA \$1780	 E3462 CIT-DIA \$1810	 E3462 GAR-DIA \$1800	 E3462 LB-DIA \$1810	 E3462 PER-DIA \$2310	 E3462 SQ-DIA \$1770	
 E3469-B PER-DIA \$2520	 E3469-B LC-DIA \$2320	 E3469-B BT-DIA \$2310	 E3469-B PT-DIA \$4030			

E3462 DIA = .30
E3469-B DIA = .42

R3462
9 X 11 center



R3472
12 X 12 center



R3462 EW
11 X 9 center



R3471
8 X 8 center



R3462 AME-DIA
\$2250



R3462-Y BT-DIA
\$2210



R3462 BT-DIA
\$2210



R3462 FR-DIA
\$2210



R3462 LB-DIA
\$2270



R3462 CIT-DIA
\$2210



R3462 WT-DIA
\$2210



R3462 PER-DIA
\$3400



R3462 LC-DIA
\$2180



R3462 SQ-DIA
\$2180



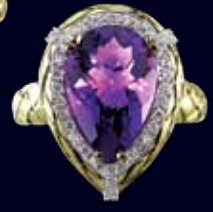
R3463 LB-DIA
\$2370



R3463 PER-DIA
\$4070



R3463 LC-DIA
\$2200



R3463 AME-DIA
\$2320



R3463 FR-DIA
\$2200



R3463 BT-DIA
\$2220



R3463 CIT-DIA
\$2230



R3463 Y BT-DIA
\$2220

R3462 DIA = .35
R3463 DIA = .35
R3469-B = .25



R3469-B PER-DIA
\$2190



R3469-B LB-DIA
\$1960



R3469-B CIT-DIA
\$1950



R3469-B Y BT-DIA
\$1940



R3469-B LC-DIA
\$1950



R3469-B FR-DIA
\$1950



R3469-B BT-DIA
\$1940



R3469-B PT-DIA
\$3350

2Side (reversible)



E3450 PER-DIA
\$2600
Dia 0.21



E3450 BT-DIA
\$1690
Dia 0.21



E3450 FR-DIA
\$1690
Dia 0.21



E3450 CIT-DIA
\$1690
Dia 0.21



PND3468 FR-DIA
\$1640
Dia = 0.03



PND3468 CIT-DIA
\$1940
Dia = 0.03



PND3468 BT-DIA
\$1770
Dia = 0.03



PND3468 LC-DIA
\$1610
Dia = 0.03

N3452-16 Inch CONF
\$3600
N3452-32 Inch CONF
\$6740
N3452-48 Inch CONF
\$9880



B3452-7 Inch CONF
\$1940





E3466 BT-DIA
\$720



E3466 CIT-DIA
\$720



E3466 PER-DIA
\$800



N3466-3R CONF
\$4080

N3466-D16 CONF-DIA
\$4500
Dia 0.32



B3466-3R CONF
\$3780

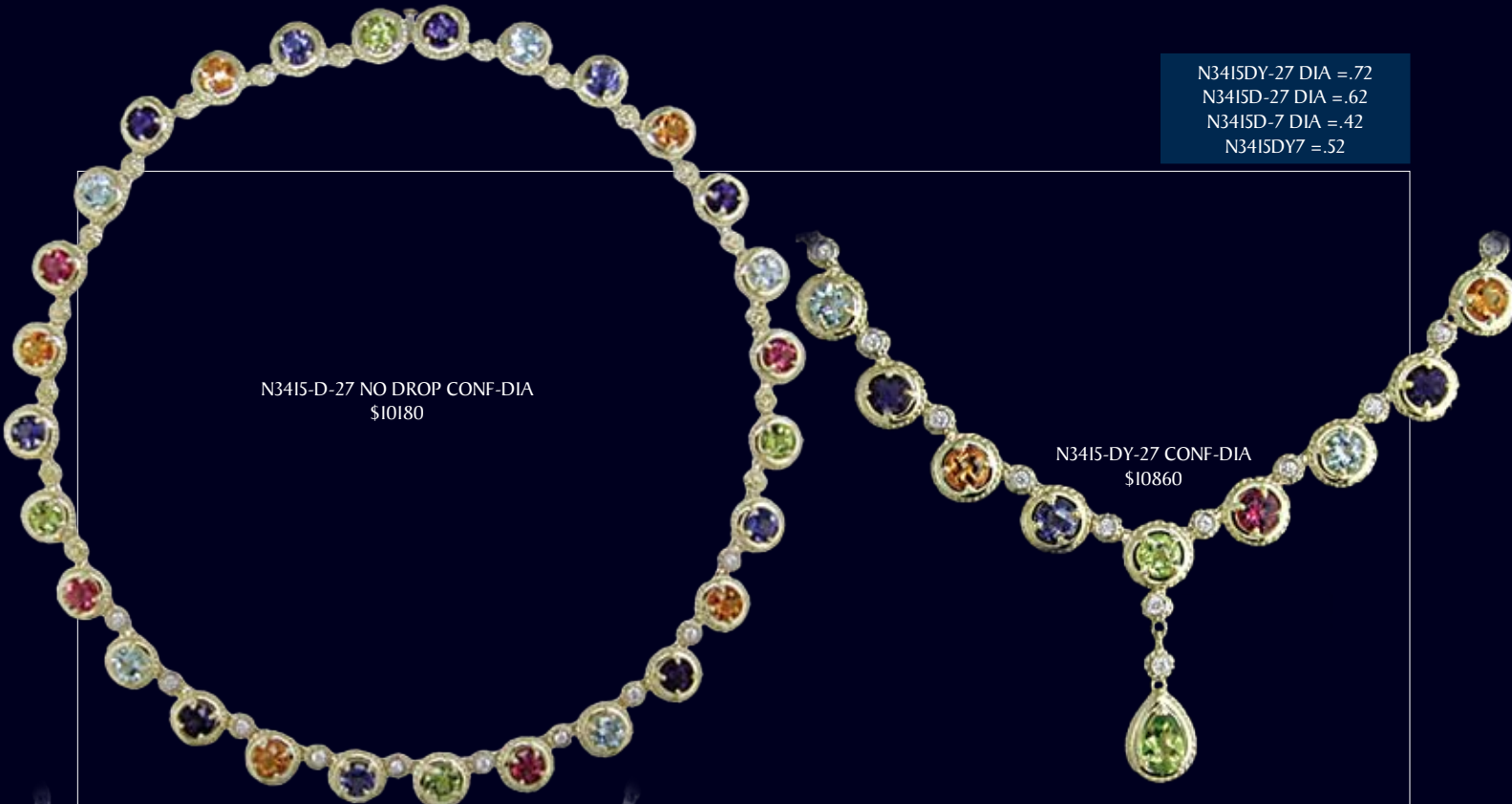


E3417DI DIA =.10

<p>E3417-DI PT-DIA \$2720</p>	<p>E3417-DI AME-PER-DIA \$1680</p>	<p>E3417-DI PER-BT-DIA \$1680</p>	<p>E3417-DI SQ-CIT-DIA \$1660</p>
<p>E3417-DI LB-DIA \$1660</p>	<p>E3417-DI BT-DIA \$1660</p>	<p>E3417-DI BT-PER-DIA \$1660</p>	<p>E3417-DI CIT-DIA \$1690</p>
<p>E3417-DI IOL-DIA \$1880</p>	<p>E3417-DI BT-IOL-DIA \$1750</p>	<p>E3417-DI CIT-PT-DIA \$2020</p>	

The Strand Collection

N3415DY-27 DIA = .72
 N3415D-27 DIA = .62
 N3415D-7 DIA = .42
 N3415DY7 = .52



N3415-D-27 NO DROP CONF-DIA
 \$10180

N3415-DY-27 CONF-DIA
 \$10860



N3415-DY-7 PT-DIA
 \$6050

N3415-DY-7 CONF-DIA
 \$4710

N3415-DY-7 BT-IOL-DIA
 \$4700

All necklaces are with detachable drop

The Strand Collection

B3415-D CONF-DIA
\$5140



B3415-D-W CONF-DIA
\$5140



B3415-D BT-IOL-DIA
\$4990



B3415-D PT-DIA
\$6820



B3415-D BT-DIA
\$4720



B3415D DIA =0.58

The Strand Collection

E3419-W PT-DIA
\$2400

E3419 IOL-DIA
\$1840

E3419 PT-DIA
\$2400

E3419 PER-DIA
\$1730

E3419 AME-DIA
\$1730

E3419 BT-DIA
\$1710

E3419 LB-DIA
\$1720

E3419 CIT-DIA
\$1700

E3419 DIA = .32

E3407 SQ
\$930

E3407 PT
\$2270

E3407 GAR
\$990

E3407 BT
\$990

E3407 IOL
\$1560

E3407 AME
\$1020

E3407 CIT
\$970

E3407 PER
\$1490

E3407-D BT-DIA
\$1780

E3407-D PER-DIA
\$2280

E3407-D PT-DIA
\$3060

E3407-D LB-DIA
\$1780

E3407-D AME-DIA
\$1810

E3407-D CIT-DIA
\$1760

E3407-D SQ-DIA
\$1720

E3407-D PER-DIA
\$2280

E3407-D IOL-DIA
\$2350

E3407D DIA = .32



B3407-D BT-DIA
\$5850
N3407-D BT-DIA
\$11380



B3407 CONF
\$6330

N3407 CONF
\$12660

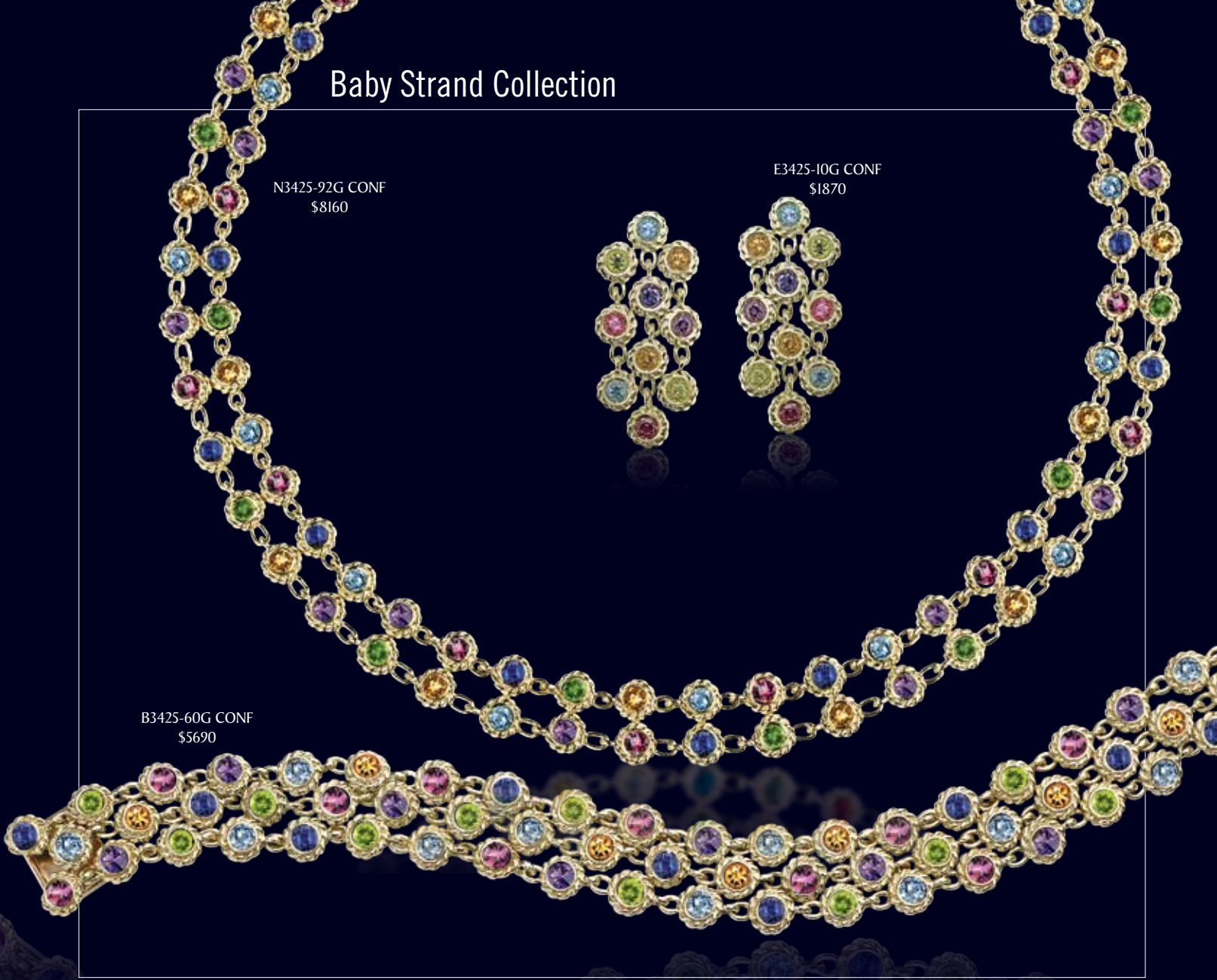
B3407D DIA =.38

Baby Strand Collection

N3425-92G CONF
\$8160

E3425-10G CONF
\$1870

B3425-60G CONF
\$5690



R3447 BT-DIA
\$2320



R3447 LB-DIA
\$2400



R3447 FR-DIA
\$2340



R3447 LC-DIA
\$2340



R3447 PER-DIA
\$3840



R3447 MINT-DIA
\$2340



R3447 SQ-DIA
\$2240

R3447 DIA = .48

The Strand Collection

R3407D DIA = .25



R3407-D SQ-DIA
\$1830



R3407-D BT-DIA
\$1910



R3407-D CIT-DIA
\$1870



R3407-D IOL-DIA
\$2550



R3407-D LB-DIA
\$1970



R3407-D PT-DIA
\$4000



R3407-D AME-DIA
\$1970



R3407-D-W AME-DIA
\$1970



R3407-D GAR-DIA
\$1970



R3407-D PER-DIA
\$3070



R3407 GAR
\$1420



R3407 SQ
\$1280



R3407 AME
\$1410



R3407 IOL
\$2000



R3407 PER
\$2520



R3407 PT
\$3450



R3407 BT
\$1360



R3407 CIT
\$1320

The Strand Collection



N3447-D6 BT-DIA
\$4600

N3447-D6 LB-DIA
\$4690

N3447-D6 FR-DIA
\$4620

N3447-D6 LC-DIA
\$4620

N3447-D6 GAR-DIA
\$4720

N3447-D6 PER-DIA
\$6130

N3447-D6 MINT-DIA
\$4620

N3447D6 DIA = 1.10

PND3447 DIA = 0.48



PND3447 LB-DIA
\$2710

PND3447 CIT-DIA
\$2640

PND3447 PER-DIA
\$4150

PND3447 BT-DIA
\$2630

PND3447 LC-DIA
\$2640

PND3447 MINT-DIA
\$2640



DW3413 DIA = .30

DW3413 BT-DIA
\$1490

DW3413 PT-DIA
\$1730

DW3413 PER-DIA
\$1480

DW3413 FR-DIA
\$1490

DW3413 GAR-DIA
\$1470



PND3407 SQ
\$830

PND3407 CIT
\$860

PND3407 GAR
\$870

PND3407 IOL
\$1160

PND3407 AME
\$890

vPND3407 BT
\$870

PND3407 PT
\$1510

PND3407 PER
\$1110



PND3407-D AME-DIA
\$1320

PND3407-D GAR-DIA
\$1300

PND3407-D CIT-DIA
\$1290

PND3407D DIA = .16

Strand Enhancer



PND3407-D BT-DIA
\$1310

PND3407-D SQ-DIA
\$1270

ENH3447 BT-DIA
\$2200

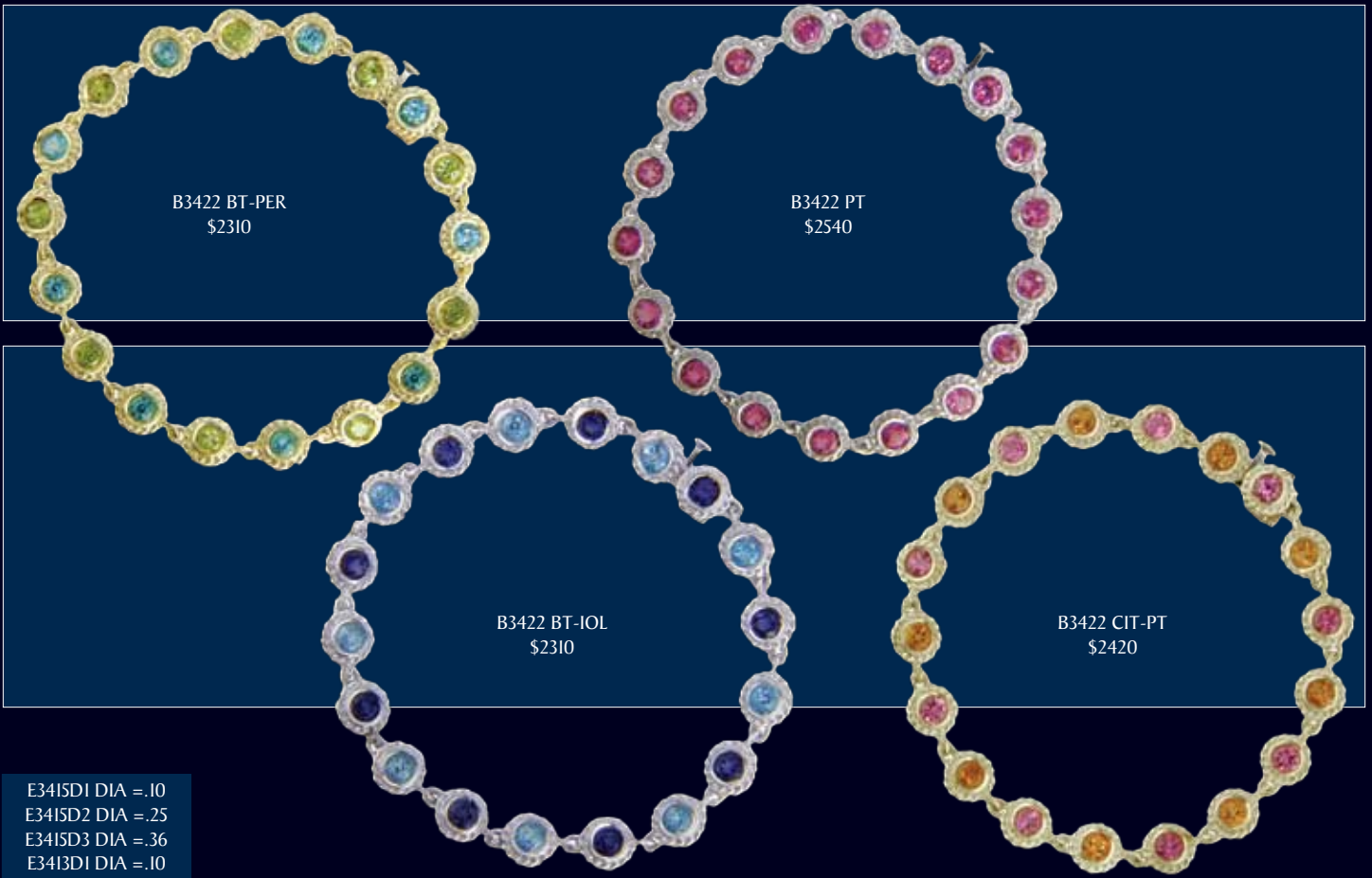
ENH3447 FR-DIA
\$2260

ENH3447 MINT-DIA
\$2260

PND3407-D PT-DIA
\$1940

ENH3447 DIA = .50

The Strand Collection



E341SD1 DIA = .10
 E341SD2 DIA = .25
 E341SD3 DIA = .36
 E3413D1 DIA = .10
 E3413D2 DIA = .24
 E3413D3 DIA = .34



© Leser Enterprises LTD, all rights reserved.

Baby Strand



PND3415-DI PER-DIA
\$860

PND3415-DI BT-DIA
\$870

PND3415-DI LB-DIA
\$890

PND3415DI DIA = .05



PND3422 AME
\$1000

PND3422 BT-IOL
\$1000

PND3422 BT
\$1000



E3422-W PT
\$1450

E3422 PT
\$1450

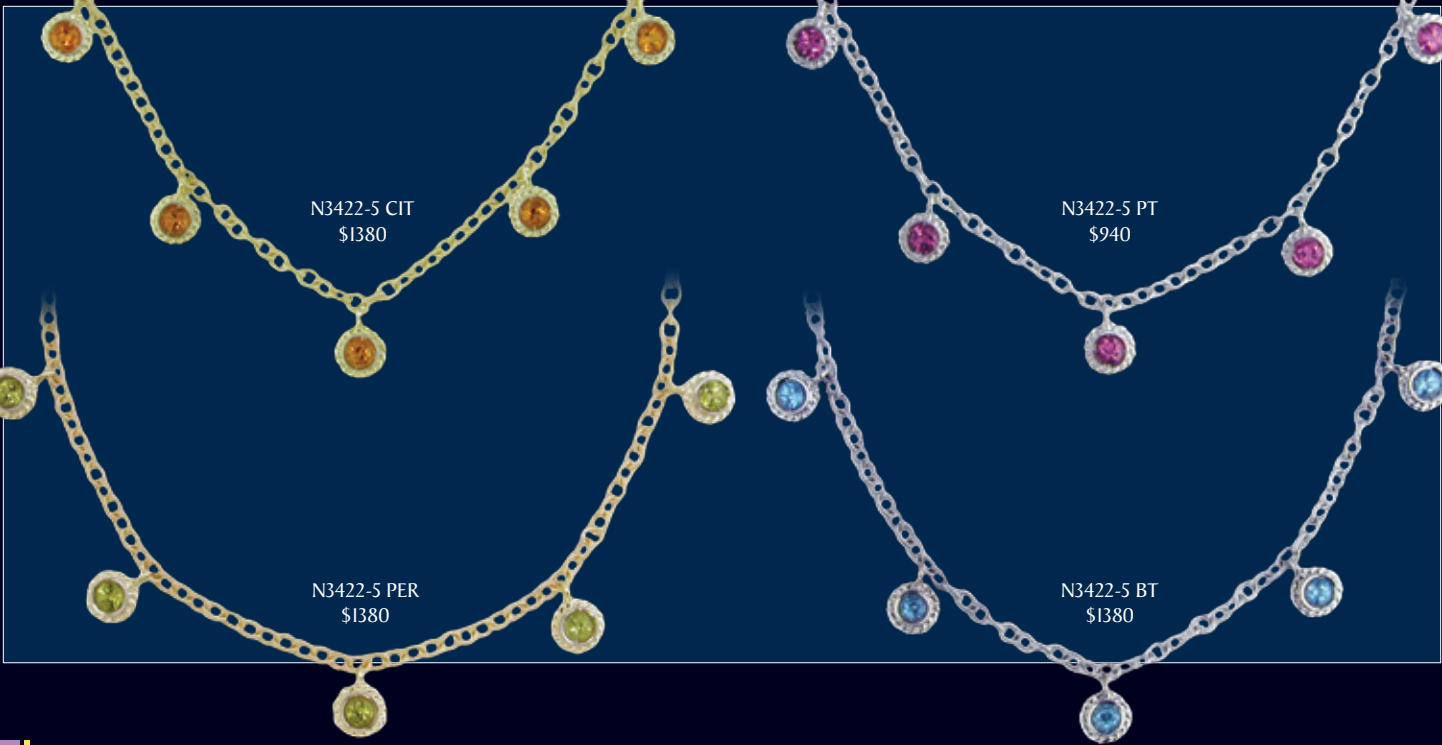
E3422 CIT-PT
\$1370

E3422 BT
\$1320

E3422 BT-PER
\$1320

E3422 BT-IOL
\$1320

E3422 PER-AME
\$1320



N3422-5 CIT
\$1380

N3422-5 PT
\$940

N3422-5 PER
\$1380

N3422-5 BT
\$1380

The Strand Collection



N3416-D4 PER-DIA
\$1360

N3416-D4 PT-DIA
\$1680

N3416-D4 CIT-DIA
\$1350

N3416-DD4 PT-DIA
\$1990

N3416-DD4 BT-DIA
\$1660

N3416 D4 DIA = .05
N3416 DD4 DIA = .20



N3419 IOL-DIA
\$1900

N3419 BT-DIA
\$1830

N3419-DD BT-DIA
\$2120

N3419 PT-DIA
\$2160

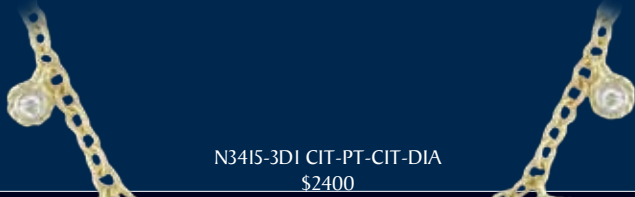
N3419-W PT-DIA
\$2160

N3419 PER-DIA
\$1830

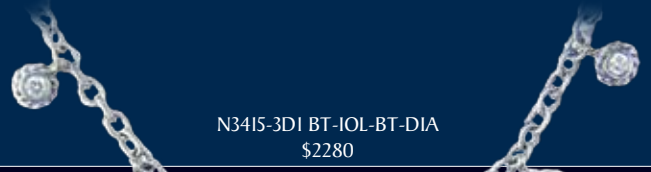
N3419 CIT-DIA
\$1820

N3419 DIA = .26
N3419DD DIA = .41

The Strand Collection



N3415-3D1 CIT-PT-CIT-DIA
\$2400



N3415-3D1 BT-IOL-BT-DIA
\$2280



N3415-D1 CIT-DIA
\$1380



N3415-D1 BT-DIA
\$1400



N3415-D1 PER-DIA
\$1380



N3416-D1 BT-DIA
\$1460



N3416-D1 PER-DIA
\$1470



N3416-3D1 CIT-PT-CIT-DIA
\$2720



N3416-3D1 BT-IOL-BT-DIA
\$2450

N3416 DI DIA = .10
N3416 3D1 DIA = .21
N3415D1 DIA = .10
N3415D4 DIA = .05



N3438 LC-DIA
\$2740

N3438 PT-DIA
\$2920

N3438 LB-DIA
\$2760

N3438 DIA = .50
PND3434 DIA = .21
E3434 DIA = .25
DE3424 DIA = .31

PND3434 PT-DIA
\$3420

PND3434 LC-DIA
\$1290

PND3434 LB-DIA
\$1390

E3434 PT-DIA
\$2550

E3434 LC-DIA
\$1270

E3434 LB-DIA
\$1300

DE3424 PT-DIA
\$2140

DE3424 LC-DIA
\$1760

DE3424 LB-DIA
\$1790

The Strand Collection



R3416D DIA = .30



R3434 PER-DIA
\$3640



R3434 CIT-DIA
\$2430



R3434 AME-DIA
\$2550



R3434 LC-DIA
\$2430



R3434 PT-DIA
\$4560



R3434 BT-DIA
\$2470



R3434 LB-DIA
\$2550



EP3415-DD PT-DIA
\$1900

EP3415-DD LB-DIA
\$1530

EP3415-D LB-DIA
\$1020

EP3415-D PT-DIA
\$1380

EP3415-D BT-DIA
\$1040

EP3415D DIA = .10
EP3415DD DIA = .43

Manhattan 3 Stone

R3410 DIA = .30



R3410 PT-DIA
\$2160



R3410 BT-DIA
\$1630



R3410 CIT-DIA
\$1630



R3410 PER-DIA
\$1670



R3410 AME-DIA
\$1630



R3410 IOL-DIA
\$1770



R3410 PT-PER-IOL-DIA
\$1870



E3409 PT-DIA
\$2690



E3409 BT-DIA
\$1690



E3409 CIT-DIA
\$1680



E3409 PER-DIA
\$1820

Manhattan Round

E3409 DIA = .30
E3410 DIA = .24



E3410 PT-DIA
\$1770



E3410 CIT-DIA
\$1280



E3410 PER-DIA
\$1300



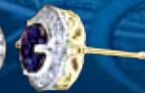
E3410 GAR-DIA
\$1270



E3410 BT-DIA
\$1270



E3410 AME-DIA
\$1280



E3410 IOL-DIA
\$1370



PND3409 PT-DIA
\$1720



PND3409 BT-DIA
\$1230



PND3409 CIT-DIA
\$1220



PND3409 PER-DIA
\$1290



PND3409 AME-DIA
\$1230



PND3409 IOL-DIA
\$1400

PND3409 DIA = .15



R3405 PT-DIA
\$2000



R3405 PER-DIA
\$1220



R3405 BT-DIA
\$1140



R3405 IOL-DIA
\$1260

R3405 DIA = .13
E3405 DIA = .26
PND3405 DIA = .13



E3405 PT-DIA
\$3310



E3405 PER-DIA
\$1760



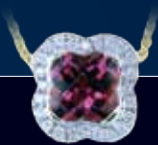
E3405 BT-DIA
\$1600



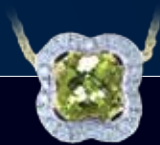
E3405 IOL-DIA
\$1830



E3405 CIT-DIA
\$1580



PND3405 PT-DIA
\$2000



PND3405 PER-DIA
\$1220



PND3405 BT-DIA
\$1140



PND3405 IOL-DIA
\$1260



PND3405 CIT-DIA
\$1140



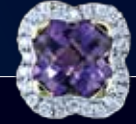
PND3405 LB-DIA
\$1180



PND3405 AME-DIA
\$1150



E3405 LB-DIA
\$1670



E3405 AME-DIA
\$1610



E3470 PER-DIA
\$410
Dia = 0.06
PND3470 PER-DIA
\$380



E3470 AME-DIA
\$410
Dia = 0.06
PND3470 AME-DIA
\$380



E3470 PKTPZ-DIA
\$410
Dia = 0.06
PND3470 PKTPZ-DIA
\$380



E3470 CIT-DIA
\$410
Dia = 0.06
PND3470 CIT-DIA
\$380



E3470 BT-DIA
\$410
Dia = 0.06
PND3470 BT-DIA
\$380

Manhattan

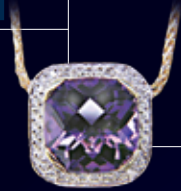
PND3380 DIA = .18
 PND3381 DIA = .15
 E3380 DIA = .36
 E3381 DIA = .30
 R3380 DIA = .18



PND3381-W IOL-DIA
\$1190



PND3381 PT-DIA
\$1520



PND3380 AME-DIA
\$1490



PND3380 CIT-DIA
\$1390



PND3380 PER-DIA
\$2610



PND3380 IOL-DIA
\$2060



R3380 GAR-DIA
\$1770

PND3380 BT-DIA
\$1410



E3380 IOL-DIA
\$3370



E3380 AME-DIA
\$2220



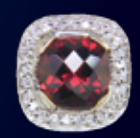
E3380 CIT-DIA
\$2020



E3380 PER-DIA
\$4470



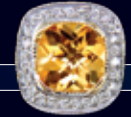
E3380 BT-DIA
\$2070



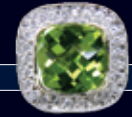
E3381 GAR-DIA
\$1500



E3381 AME-DIA
\$1500



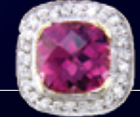
E3381 CIT-DIA
\$1490



E3381 PER-DIA
\$1560



E3381 BT-DIA
\$1520



E3381 PT-DIA
\$2360



R3380 AME-DIA
\$1810



R3380 CIT-DIA
\$1710



R3380 PER-DIA
\$2900



R3380 BT-DIA
\$1730

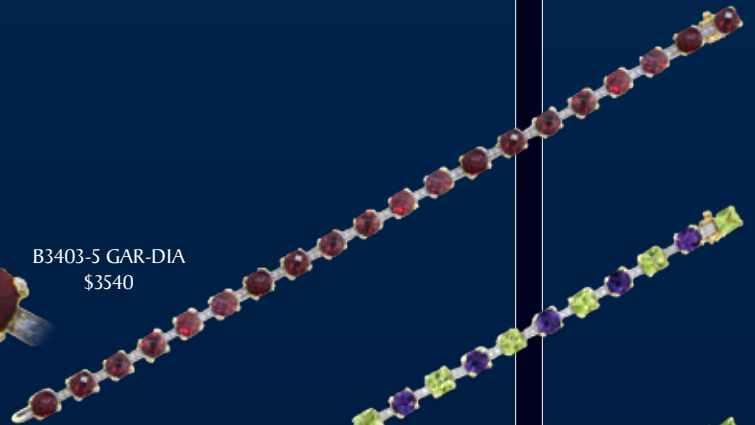


R3380 PT-DIA
\$3870

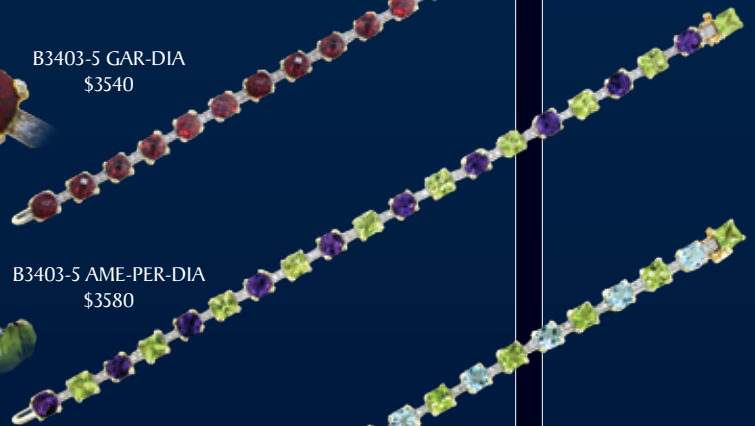
B3403-5 CONF-DIA
\$4260



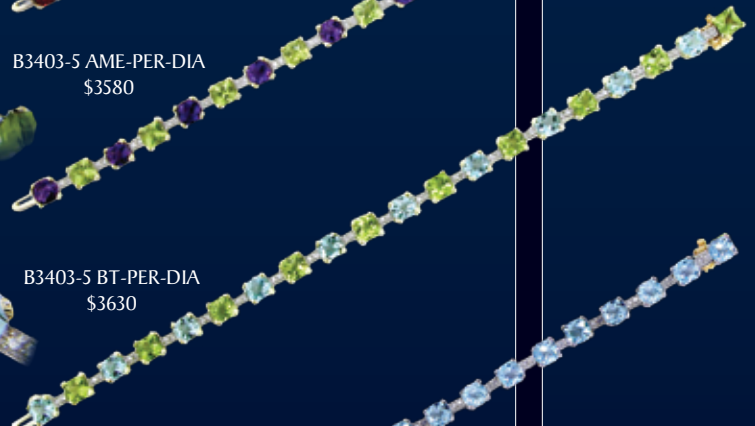
B3403-5 GAR-DIA
\$3540



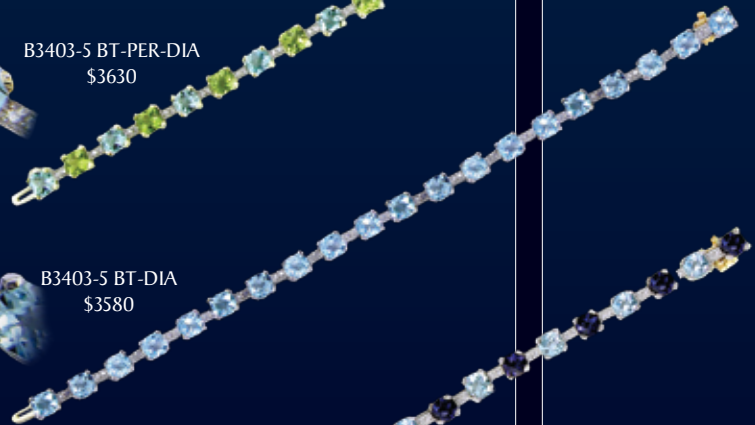
B3403-5 AME-PER-DIA
\$3580



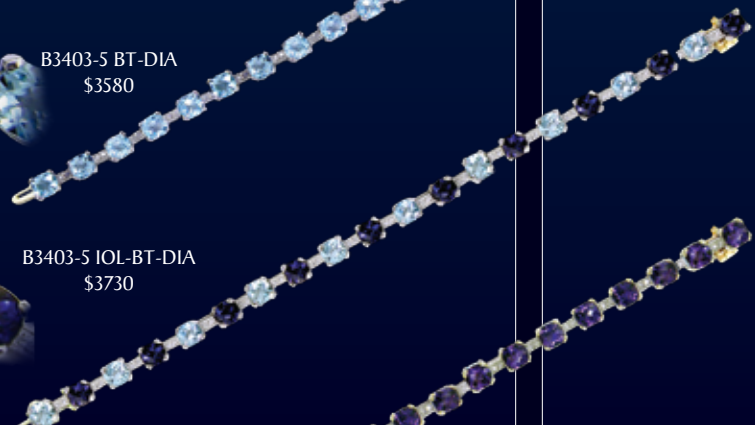
B3403-5 BT-PER-DIA
\$3630



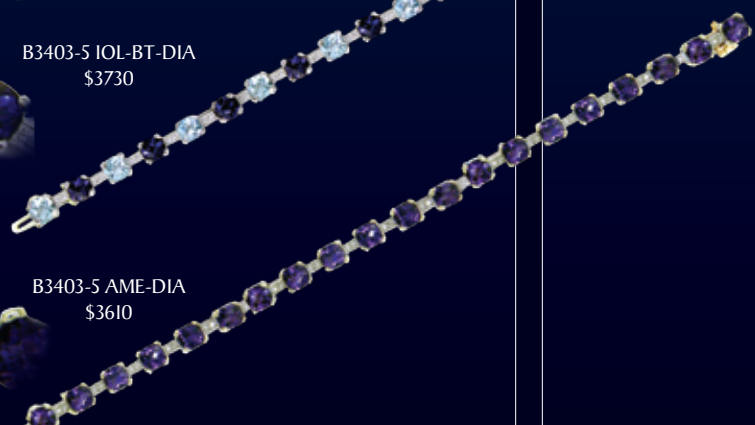
B3403-5 BT-DIA
\$3580



B3403-5 IOL-BT-DIA
\$3730



B3403-5 AME-DIA
\$3610



B3403 DIA = .20

Manhattan

DE3420 DIA = .06
PND3420 DIA = .03

DE3420 CIT-DIA
\$840



DE3420 LC-DIA
\$840



DE3420 GAR-DIA
\$860



DE3420 MINT-DIA
\$840



PND3371 FR-PER-DIA
\$1110



DE3420 SQ-DIA
\$800



DE3420 LB-DIA
\$880



DE3420 AME-DIA
\$880



DE3420 BT-DIA
\$840



DE3420 PT-DIA
\$2180



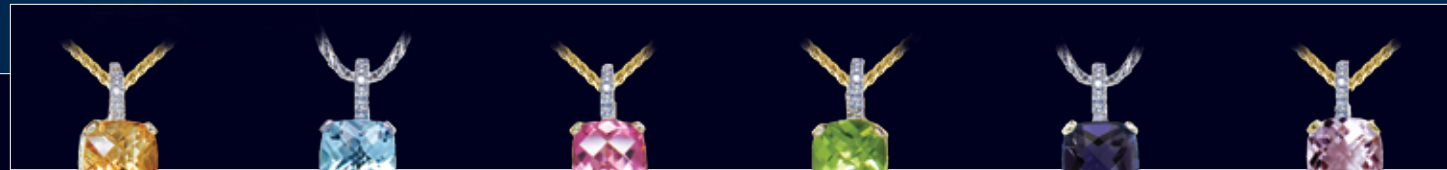
DE3420 PER-DIA
\$1370



DE3420 IOL-DIA
\$1430



DE3420 FR-DIA
\$880



PND3420 CIT-DIA
\$770

PND3420 BT-DIA
\$770

PND3420 PT-DIA
\$1440

PND3420 PER-DIA
\$1040

PND3420 IOL-DIA
\$1060

PND3420 FR-DIA
\$790



E3371 CIT-DIA
\$1360



E3371 BT-DIA
\$1420



E3371 PT-BT-DIA
\$5160



E3371 BT-PER-DIA
\$1500



E3371 AME-BT-DIA
\$1410



E3371 AME-DIA
\$1480



E3371 GAR-DIA
\$1580



PND3371 BT-LC-DIA
\$1110



PND3371 BT-DIA
\$1050



PND3371 AME-DIA
\$1080

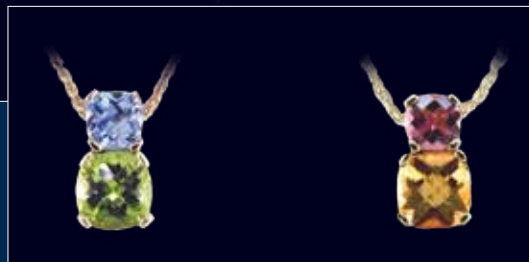
E3371 DIA = .06
PND3371 DIA = .03

PND3401-8 BT
\$470



PND3401-8 PER
\$710

PND3408 PER-BT
\$1080



PND3408 CIT-PT
\$1060



PND3373 CIT-IOL
\$990



PND3373 SQ-BT
\$900



PND3373 BT-IOL
\$1000



PND3373 CIT-PT
\$1370

PND3373 GAR-CIT
\$920



PND3373 CIT-SQ
\$900



PND3373 BT-PER
\$1000



PND3373 IOL-BT
\$1510



PND3373 PT-PER
\$2970



PND3373 AME-PER
\$1000



PND3373 AME-PT
\$1370



PND3373 BT-AME
\$990

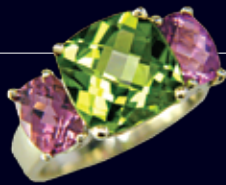


PND3373 SQ-CIT
\$900

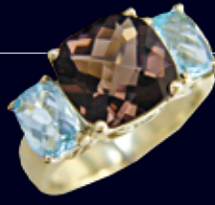
Rhapsody



R3384 AME-PER
\$1130



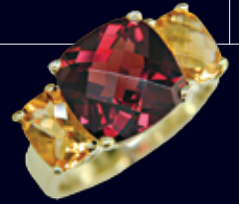
R3384 PER-PT
\$2750



R3384 SQ-BT
\$1000



R3384 SQ-CIT
\$1000



R3384 GAR-CIT
\$1070



R3384 BT-PT
\$1600

R3384 FR-PER
\$1130



R3384 BT-CIT
\$1000



R3384 AME-PT
\$1600



R3384 BT-LB
\$1050



R3384 BT-PER
\$1030

R3384 FR-AME
\$1130



R3384 FR-PT
\$1600



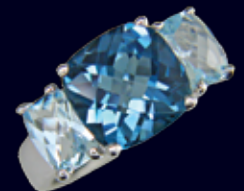
R3384 IOL-BT
\$1700



R3384 PER-BT
\$2240



R3384 LC-PT
\$1600



R3384 LB-BT
\$1070



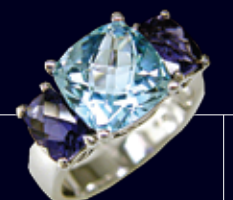
R3384 FR-AME
\$1130



R3384 PT-PER
\$3020



R3384 SQ-PT
\$1600



R3384 BT-IOL
\$1090

Rhapsody



R3384 LC-FR
\$1030



R3384 BT-LC
\$1000



R3384 BT-PT
\$1600



R3373 FR-PER
\$1290



R3373 IOL-BT
\$1740



R3373 BT-IOL
\$1320



R3373 BT-PER
\$1250



R3373 FR-BT
\$1150



R3373 LB-BT
\$1170



R3373 AME-PT
\$2030



R3373 AME-PER
\$1290



Rhapsody

R3373 IOL-PER
\$2340



R3373 CIT-PT
\$2030



R3373 PER-AME
\$2340



R3373 CIT-SQ
\$1080



R3373 FR-AME
\$1320



R3373 WT-PT
\$2030



R3373 CIT-IOL
\$1290



R3373 GAR-CIT
\$1170



R3373 PER-PT
\$2290

Rhapsody



E3373 BT
\$1150



E3373 BT-IOL
\$1340



E3373 PT-PER
\$5290



E3373 IOL-BT
\$2370



E3373 CIT-PT
\$2030



E3373 CIT-IOL
\$1330



E3373 BT-PER
\$1340



E3373 FR-AME
\$1260



E3373 AME-PER
\$1350



E3373 AME-PT
\$2090



E3373 BT-AME
\$1190



E3373 BT-LB
\$1150



E3373 GAR-CIT
\$1190



E3373 CIT-SQ
\$1070



E3373 SQ-CIT
\$1070



E3373 SQ-BT
\$1070



E3373 AME
\$1260



E3373 CIT
\$1150



B3389-28 PER-PT
\$4020



B3389-28 BT-IOL
\$3070



B3389-28 AME-PT
\$4020



B3389-28 BT-PER
\$2890



B3389-28 CIT-PT
\$3270



B3389-28 PER-AME
\$2890



B3389-28 GAR-CIT
\$2810



B3389-28 CONF
\$2980

							
E3408 IOL-BT \$1470	E3408 BT-IOL \$1010	E3408 FR-AME \$910	E3408 AME-PER \$930	E3408 SQ-PT \$1350			
							
E3408 SQ-CIT \$890	E3408 GAR-CIT \$890	E3408 CIT-PT \$1350	E3408 BT \$930	E3408 BT-PER \$870			
							
E3408 AME-PT \$1350	E3408 PER-PT \$1880	E3408 CIT-IOL \$1010	E3408 BT-LB \$890				
							
E3408 SQ-BT \$890	DE3401-8 PER \$1250	DE3401-8 BT \$750					
							
E3401-8 CIT \$630	E3401-7 CIT \$560	E3401-8 AME \$630	E3401-7 AME \$560	E3401-8 BT \$630	E3401-7 BT \$560	E3401-8 GAR \$640	E3401-7 GAR \$580
							
E3401-6 CIT \$480	E3401-5 CIT \$410	E3401-6 AME \$480	E3401-5 AME \$410	E3401-6 BT \$480	E3401-5 BT \$410	E3401-6 GAR \$480	E3401-5 GAR \$410
							
E3401-8 IOL \$1190	E3401-7 IOL \$780	E3401-8 PER \$1120	E3401-7 PER \$620	E3401-8 PT \$1910	E3401-7 PT \$1440		
							
E3401-6 IOL \$600	E3401-5 IOL \$440	E3401-6 PER \$480	E3401-5 PER \$410	E3401-6 PT \$940	E3401-5 PT \$650		

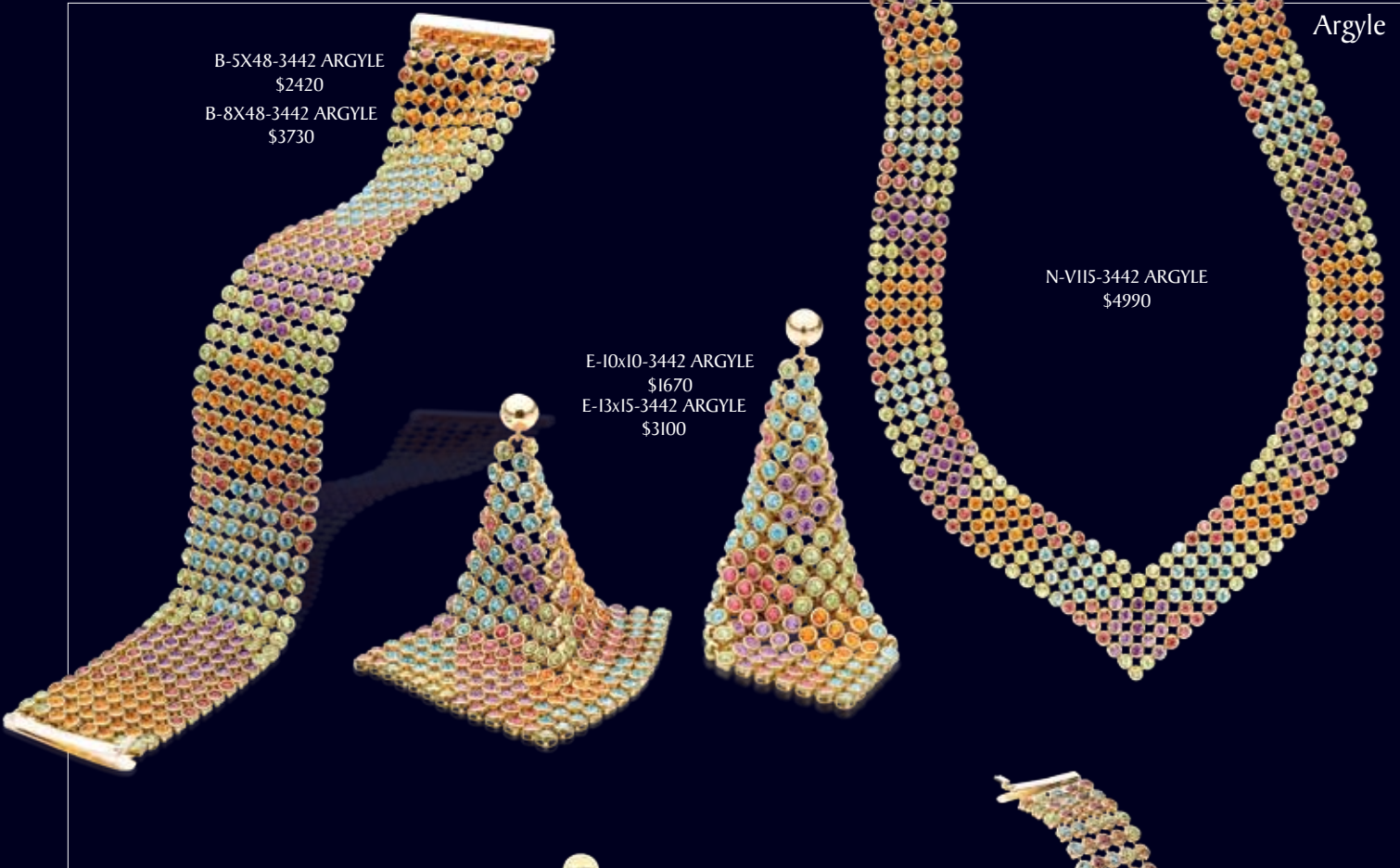
Argyle

B-5X48-3442 ARGYLE
\$2420

B-8X48-3442 ARGYLE
\$3730

E-10x10-3442 ARGYLE
\$1670
E-13x15-3442 ARGYLE
\$3100

N-VII5-3442 ARGYLE
\$4990



Confetti

B-5X48-3423 CONF
\$2350

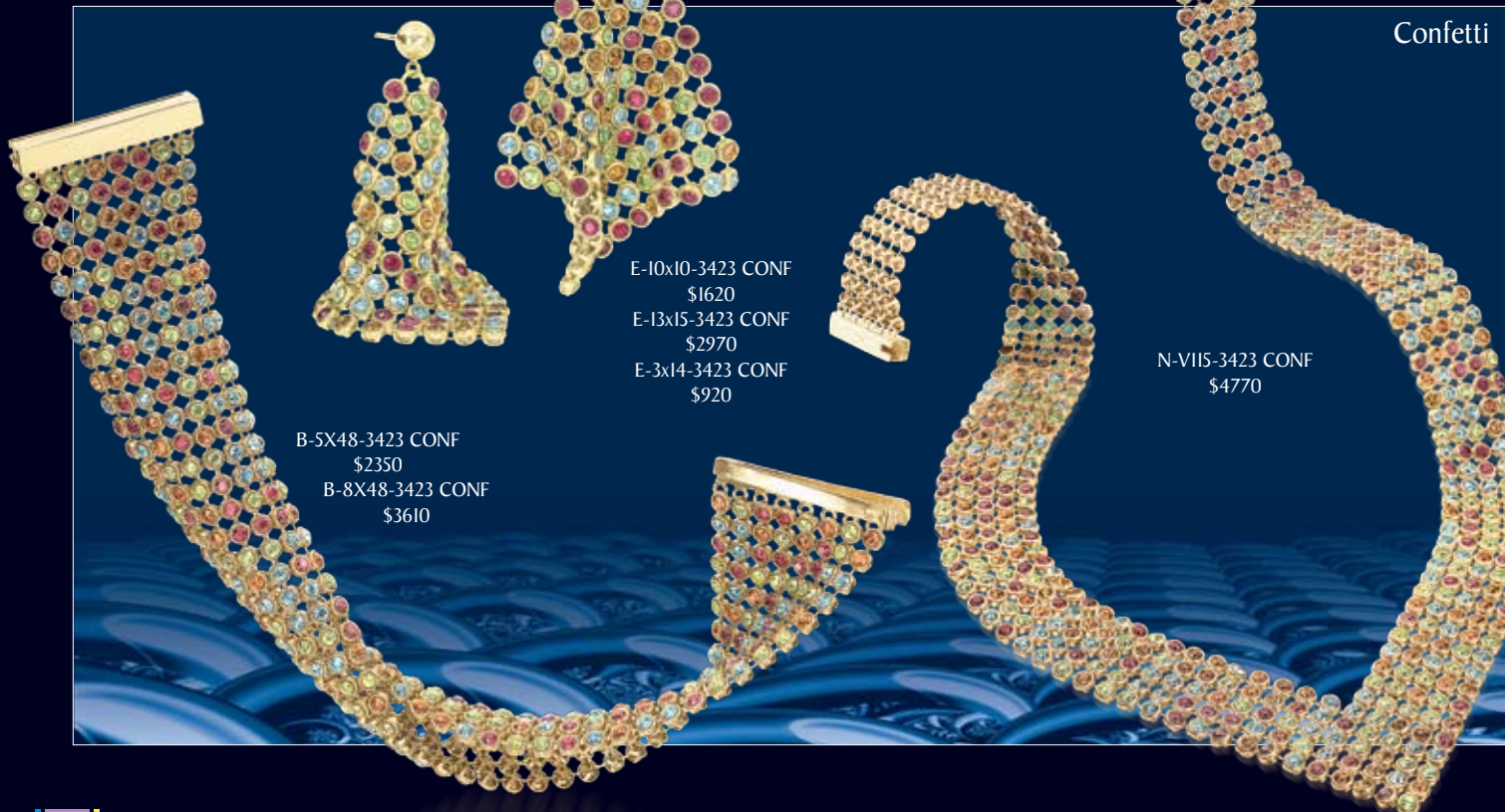
B-8X48-3423 CONF
\$3610

E-10x10-3423 CONF
\$1620

E-13x15-3423 CONF
\$2970

E-3x14-3423 CONF
\$920

N-VII5-3423 CONF
\$4770



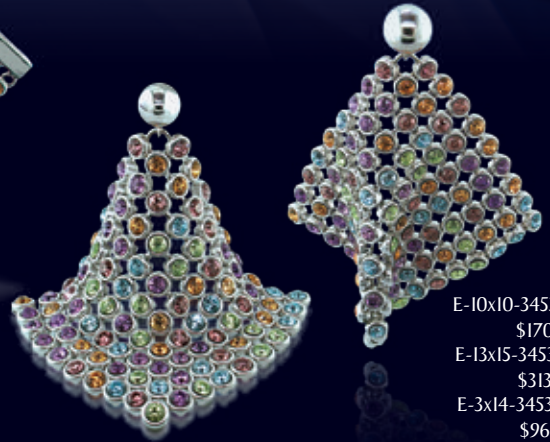
N-VIIS-3453 PASTEL
\$5420

N-VIIS-3467 WT
\$5420



B-5X48-3453 PASTEL
\$2470

B-8X48-3453 PASTEL
\$3780



E-10x10-3453 PASTEL
\$1700

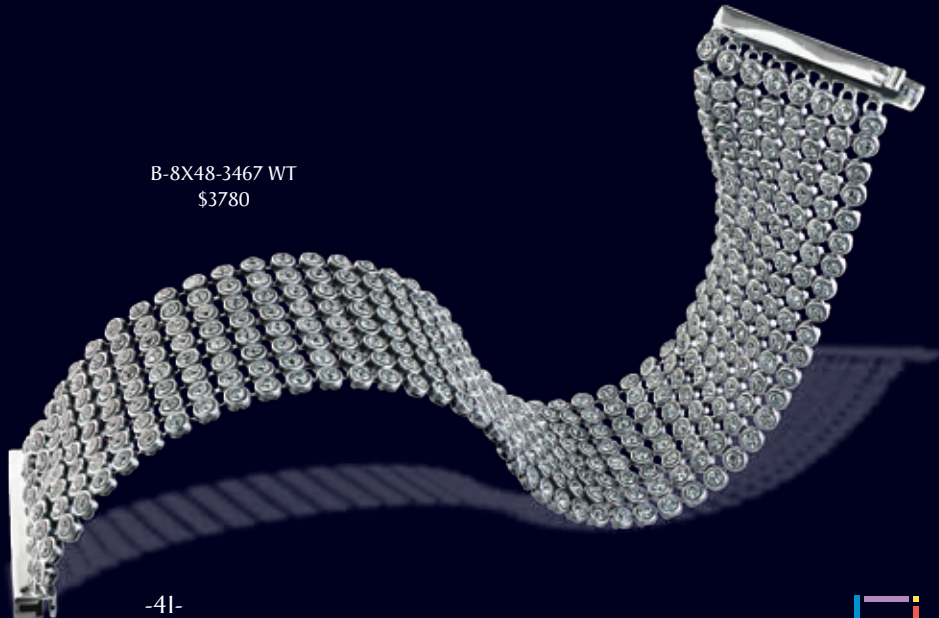
E-13x15-3453 PASTEL
\$3130

E-3x14-3453 PASTEL
\$960



E-10X10-3467 WT
\$1700

B-8X48-3467 WT
\$3780



PND3461-8X6-TT WT
\$2380



PND3461-8X6 PASTEL
\$2380



PND3461-8X6 CONF
\$2380



PND3461-8X6 WT
\$2380



PND3459-8X6-TT WT
\$2230



PND3459-8X6 PASTEL
\$2230



PND3459-8X6 CONF
\$2230



PND3459-8X6 WT
\$2230



PND3460-7X5-TT WT
\$2060



PND3460-7X5 PASTEL
\$2060



PND3460-7X5 CONF
\$2060



PND3460-7X5 WT
\$2060



PND3458-7X5-TT WT
\$2050



PND3458-7X5 PASTEL
\$2050



PND3458-7X5 CONF
\$2050



PND3458-7X5 WT
\$2050



E3454-2X20 CONF
\$2040



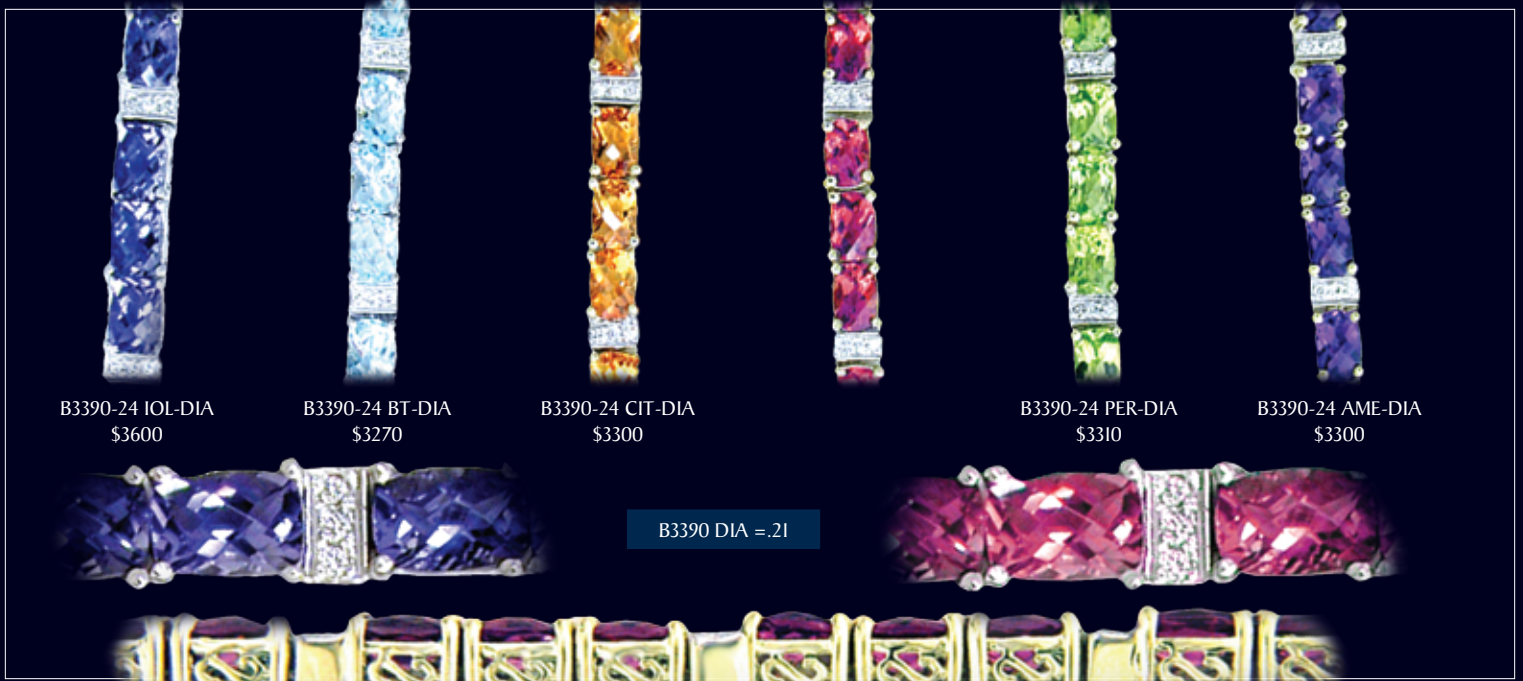
E3454-2X20 WT
\$2090



E3454-2X20 PASTEL
\$2090



Manhattan



B3390-24 IOL-DIA
\$3600

B3390-24 BT-DIA
\$3270

B3390-24 CIT-DIA
\$3300

B3390-24 PER-DIA
\$3310

B3390-24 AME-DIA
\$3300

B3390 DIA = .21

PARISIAN



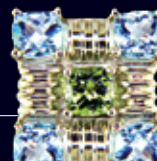
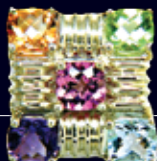
B3387-34 CONF
\$10160



B3387-34 PT-PER
\$12960



B3387-34 IOL-BT
\$10160



Color Story®

The Strand™ Collection

© 2005 Color Story. All Rights Reserved.

Jewelously® Collection

Color Story®

Manhattan pure®

Available at selected retailers

Color Story®

Rhapsody Cocktail Rings

Color Story®